



CANTERBURY

Lot 662, Arbor Green, Rolleston,  
Selwyn

**equiti**

Licensed under the REAA 2008



Today Homes

# Rolleston

Lot 662, Arbor Green

**Home Size:** 210m<sup>2</sup>

**Section Size:** 611m<sup>2</sup>



5



2



3



3



1



\*Artist impressions only. Finishes and details may vary.

Investment Home & Land Package

**\$1,139,000**

Turnkey

Rental Appraisal  
\$1,180 Per Week

Annual Rental  
\$61,360

Gross Yield  
5.39%

Title  
August 2026





At Today Homes, we back our builds with real confidence. That's why we offer a **2-Year Rental Guarantee** on our investment properties.

We'll secure your rental income at the **top end** of the independent appraisal (found later in this brochure)— giving you consistent returns, even if your property sits vacant or under performs.



With our Fixed Price Guarantee, you'll know exactly what your investment build will cost – no surprises, no hidden extras.

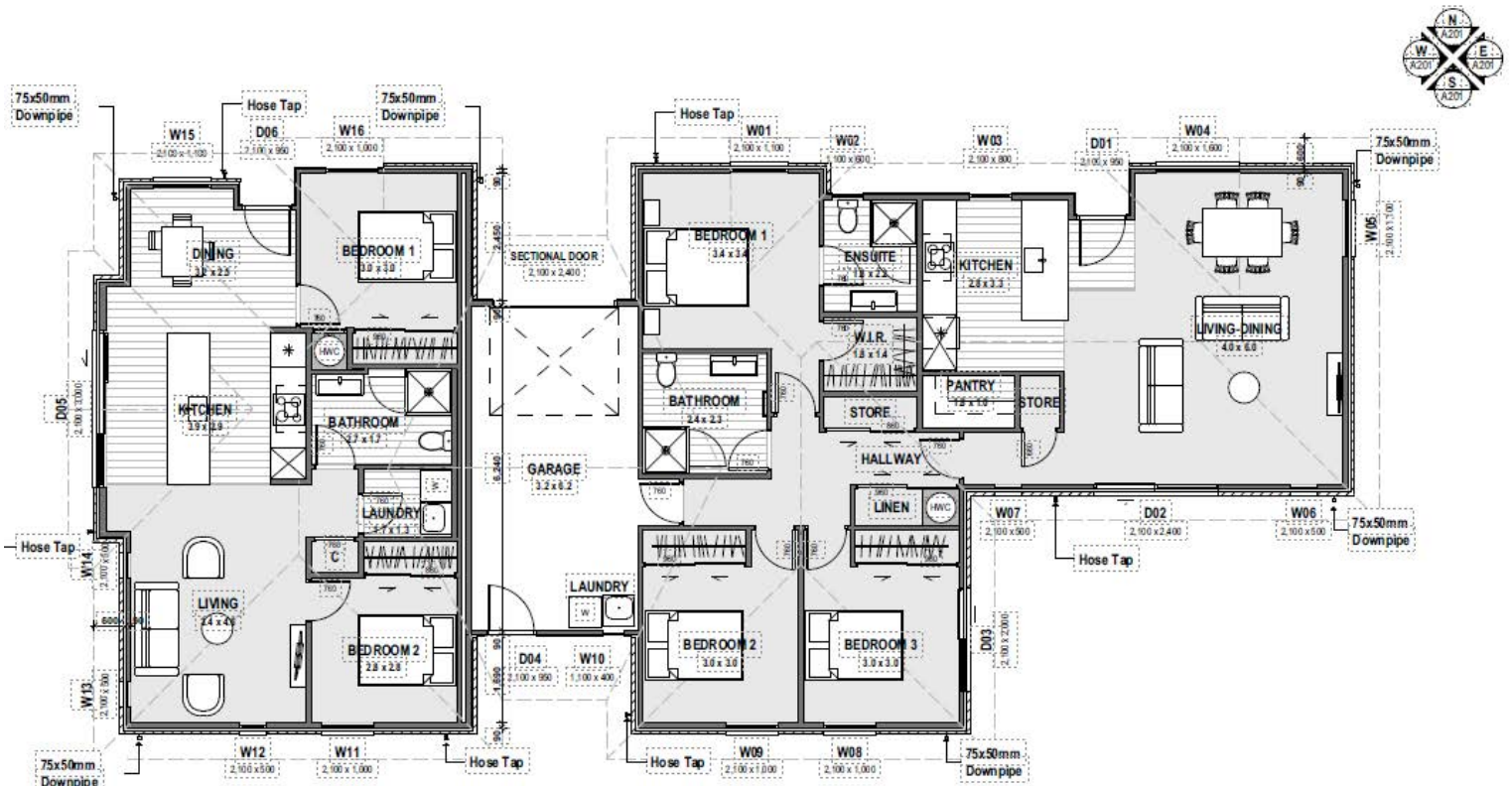
**Everything is locked in upfront, giving you total confidence & clarity around your return. It's peace of mind for smart investors.**

# Floor Plan



**Home Size: 210m<sup>2</sup>**

**Section Size: 611m<sup>2</sup>**



This custom investment plan features three bedrooms, two bathrooms, as well as a separate two bedroom and bathroom. This has two very functional living and kitchen areas, single garage with internal access and it is well positioned to receive all day sun.

## THIS FLOOR PLAN INCLUDES:

- |   |                                  |
|---|----------------------------------|
| 2 x Designer Kitchens with quality BOSCH appliances | Family bathroom with separate WC |
| Open Plan Kitchen/Dining/Living area                | Large linen cupboard             |
| Stone bench top                                     | Heat pumps                       |
| Five double bedrooms                                | Internal Access garage           |
| Ensuite & walk in wardrobe in Master                | Laundry in the garage            |



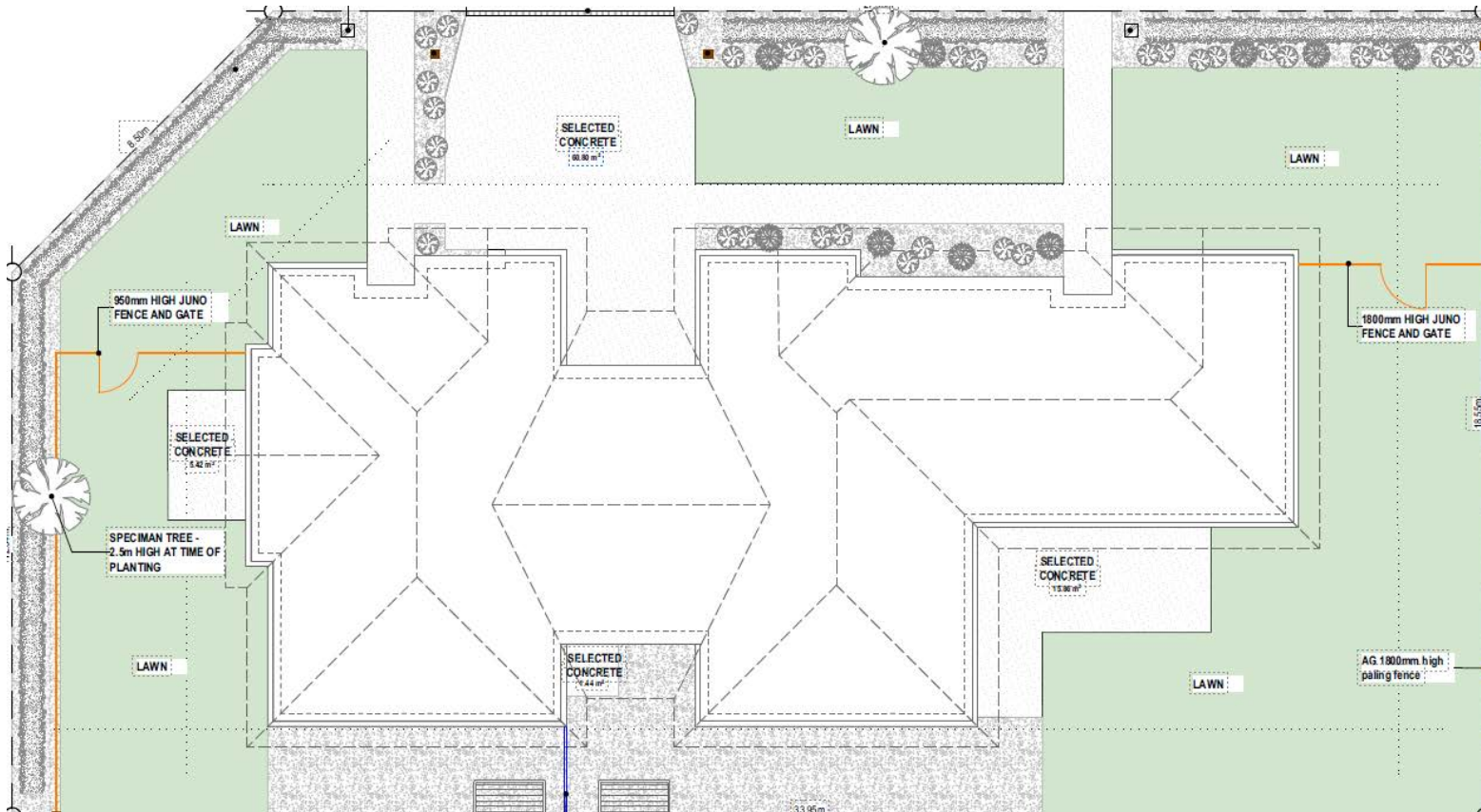
jon@todayhomes.co.nz

027 420 5565

www.todayhomes.co.nz



# Site Plan



## THIS INVESTMENT PACK INCLUDES:

Healthy Homes Report

Rental Appraisal

Exterior and Interior Designer Colour Scheme

Full All Risk Building Insurance

1 Year Defect and Maintenance Period

Boundary fencing

Clothesline

Letterbox

Internal fencing and gate

Soft Landscaping (top soil, plants and hydro seeded grass)

Feature LED pendant light over breakfast bar

Driveway/Road Crossing - as per plans

Concrete Patio And paths – as per plans

Blinds Package



[jon@todayhomes.co.nz](mailto:jon@todayhomes.co.nz)

027 420 5565

[www.todayhomes.co.nz](http://www.todayhomes.co.nz)

# Features



## Key Features

10 Year Registered Master Build Guarantee

Designer Kitchen With Stone Benchtop

Undermounted Stainless Steel Kitchen Sink

Preplumbed Fridge Connection

Bosch Appliances

250L Hot Water Cylinder

Daikin Heat Pump

LED Lighting

Aluminium Front door

Aluminium Thermally Broken with Argon Gas and Low-E Glass Windows

Windsor Garage Door

Foundation and Wall/Roof Insulation H1 Compliant

Services, Building Consent & Related Fees all included



[jon@todayhomes.co.nz](mailto:jon@todayhomes.co.nz)

027 420 5565

[www.todayhomes.co.nz](http://www.todayhomes.co.nz)

# Subdivision Plan



## Arbor Green

Open spaces, places to play, friends to meet, it's all at Arbor Green. Whether you're a growing family, downsizer or up-and-comer, whatever kind of life you imagine, there's a home for you there. The new master-planned development of Arbor Green is a place of growth, shelter and connection.

Here, all walks of life can find everything they need to thrive. Local employment opportunities and easy access to motorways into Christchurch (25 minutes) and all points south via SH1 make this a very convenient and easy place to live. The amenity value of Rolleston (the fastest growing town in New Zealand) and the wider Selwyn district is second to none and is attracting owner and occupiers alike. Numerous brand new schools, a leisure and aquatic centre, superb playing fields (a lot of which are flood lit) and a lively town centre development with numerous retail and hospitality opportunities all add to the appeal.



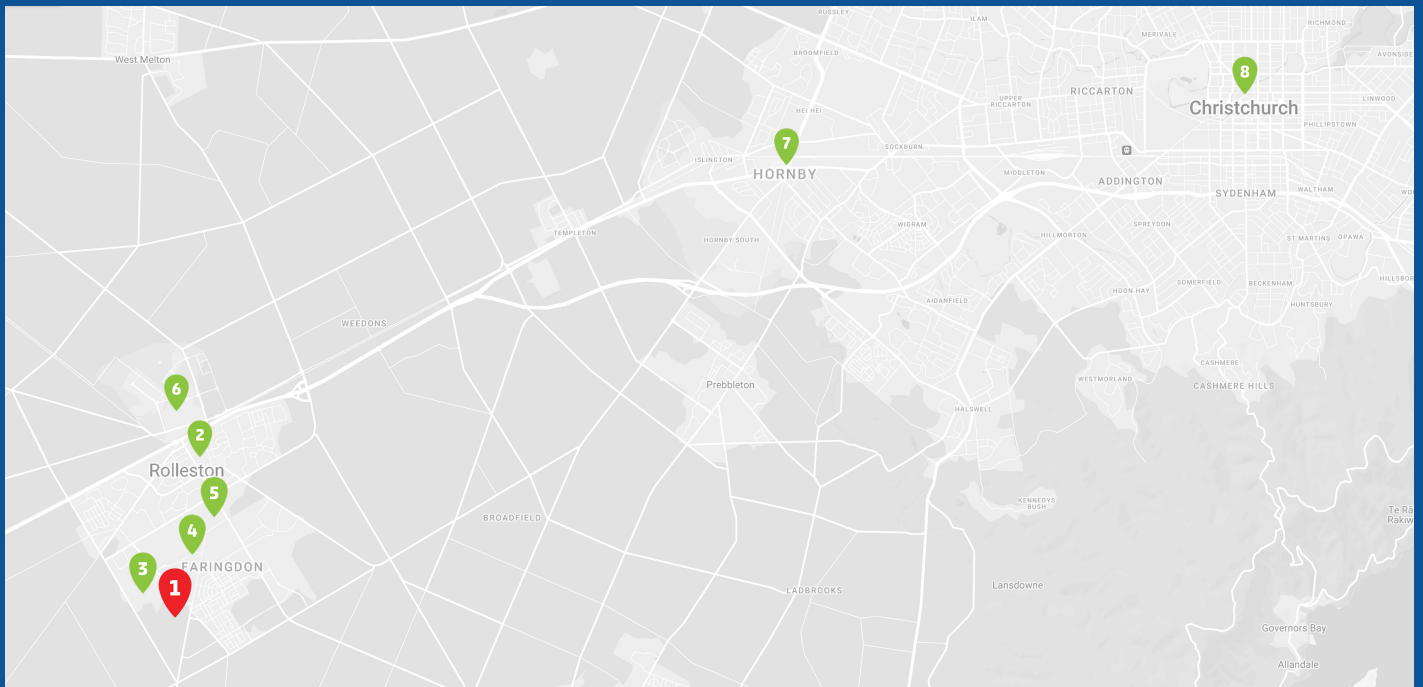
[jon@todayhomes.co.nz](mailto:jon@todayhomes.co.nz)

027 420 5565

[www.todayhomes.co.nz](http://www.todayhomes.co.nz)



# Location & Amenities



## Amenities

- |  |                          |
|--|--------------------------|
| 1. Arbor Green Subdivision                         | 5. Rolleston College     |
| 2. Rolleston Town Centre                           | 6. Izone Industrial Park |
| 3. New Woolworths supermarket (under construction) | 7. Hornby                |
| 4. Foster Park                                     | 8. Christchurch          |

## ROLLESTON – A THRIVING COMMUNITY

Rolleston has experienced significant growth in recent years and is known for its residential developments and community amenities. It has become a popular choice for people looking for a suburban lifestyle while still being within commuting distance of Christchurch.

The town offers a range of amenities, including shopping centers, supermarkets, restaurants, cafes, and recreational facilities. There are also several schools, parks, and sports fields in the area, making it a family-friendly community. In addition to its residential areas, Rolleston is surrounded by farmland and rural landscapes. The area is known for its agricultural activities, including dairy farming, cropping, and horticulture. One of the notable attractions in Rolleston is the Foster Park, which features sports fields, playgrounds and walking tracks. It's a popular spot for outdoor activities and community events.



# RENTAL APPRAISAL

18<sup>TH</sup> NOVEMBER 2025

THG

PROPERTY MANAGEMENT

ADDRESS:  
LOT 662 ARBOR GREEN, ROLLESTON



RANGE:  
House: \$580pw - \$630pw  
Unit: \$525pw - \$550pw

## PROPERTY DESCRIPTION:

The property features two dwellings, one two-bedroom, one bathroom and an open plan kitchen and dining and living and one three-bedroom, two bathroom with an open plan kitchen, dining and living. Both are heated by a heat pump and double-glazed. The properties feature modern and neutral decor throughout. Situated on an easy-care private and partially fenced section. Single-car garage for the house and off-street parking. Great location and close to all amenities.

## COMPARABLE RENTAL PROPERTIES:

34 Lady Isaac Drive, Rolleston	3 bedrooms, 2 bathrooms	\$580pw
16 Billy T Lane, Rolleston	3 bedrooms, 2 bathrooms	\$630pw
36 McCormick Lane, Rolleston	2 bedrooms, 1 bathroom	\$540pw
90b Finn Avenue, Rolleston	2 bedrooms, 1 bathroom	\$550pw

ASHLEIGH CLUTTERBUCK  
DIRECTOR & BUSINESS DEVELOPMENT MANAGER

+ 64 27 353 3390  
ASHLEIGH.CLUTTERBUCK@THG-PM.COM



*Ashleigh Clutterbuck*

DISCLAIMER:  
The Hancock group property management have carried out this rental appraisal in good faith based on comparative available properties and local area knowledge. The appraisal is reflective of current market conditions, so may change in the future. No on site inspection has taken place and this appraisal is not intended for financial purposes. If your purpose of this appraisal is for finance, please let us know.

It is assumed the property appraised complies with all tenancy-related requirements; for example healthy homes law and insurance standards and has necessary building consents and council codes and bylaws required for use as permanent habitable accommodation. No liability is acceptable for error or omission of fact or opinion.

# Your Property Manager

## ASHLEIGH CLUTTERBUCK

### AWARDS:

NEW START PROPERTY MANAGER 2016,

PROPERTY MANAGER OF THE YEAR 2017

INTERNATIONAL PROPERTY MANAGER OF THE YEAR 2018

REINZ ACCREDITED PROPERTY MANAGER

### THE FACTS:

Ashleigh is the founder of THG Property Management. After ten years of growth, Ashleigh is not only highly qualified but also highly commended by her colleagues and clients. This trust has given her a sense of purpose and a deep love for her job. With the experience she has gained, she has implemented reliable processes and built a strong team, ensuring that while THG may not be the biggest, it is the best. With your investment run like a business, she aims to ensure financial freedom for your future. Ashleigh is focused on customer services she is personable, efficient, and a problem solver.

### THE FLUFF:

Beyond real estate Ashleigh is a disciplined paddler and a member of the bayside community, she has a love for nature and can be found on the water front with her fiancé and dog. Ashleigh enjoys a fine wine and a good laugh.



## Why Property Management Matters

At Today Homes, we know a great property is only part of a great investment. That's why we've partnered with THG Property Management – a trusted team led by award-winning expert Ashleigh Clutterbuck.

With a proven track record in maximising rental returns and ensuring long-term tenancy stability, THG offers investors peace of mind and hands-on support from day one. From tenant screening to ongoing maintenance, your property is in experienced, reliable hands.



[jon@todayhomes.co.nz](mailto:jon@todayhomes.co.nz)

027 420 5565

[www.todayhomes.co.nz](http://www.todayhomes.co.nz)



# Who are Today Homes?

## #1 Largest Builder in Selwyn District TOP NEW HOUSE BUILDERS October 2023 to September 2024

Selwyn  
Summary Of All Dwellings  
All Dwelling Values

Builder	Oct	Nov	Dec	Jan	Feb	Mar	Apr	May	Jun	July	Aug	Sep	Total	% N°	N°/mth	Rank
Today Homes Ltd	14	14	8	3	6	10	9	16	3	8	5	5	101	8.2	8.4	1
Oakridge Homes Ltd	0	13	6	0	0	0	1	12	24	11	5	0	72	5.8	6.0	2
Mike Greer Homes	1	2	0	1	3	3	13	12	19	1	6	1	62	5.0	5.2	3
Kevler Homes	0	0	1	0	0	0	21	0	4	17	11	0	54	4.4	4.5	4
Green Homes	24	6	0	4	0	0	0	0	2	0	8	0	44	3.6	3.7	5
Golden Homes	3	7	0	4	2	7	5	2	1	0	4	7	42	3.4	3.5	6

## #4 Largest Builder in Canterbury TOP NEW HOUSE BUILDERS October 2023 to September 2024

Canterbury Region  
Summary Of All Dwellings  
All Dwelling Values

Builder	Oct	Nov	Dec	Jan	Feb	Mar	Apr	May	Jun	July	Aug	Sep	Total	% N°	N°/mth	Rank
Mike Greer Homes	30	95	14	25	27	16	45	118	59	28	52	66	575	9.2	47.9	1
Williams Corporation	75	0	5	0	0	29	30	0	22	20	27	0	208	3.3	17.3	2
Oakridge Homes Ltd	9	13	18	5	10	12	20	24	24	30	18	4	187	3.0	15.6	3
Today Homes Ltd	15	16	11	6	6	10	11	20	5	19	9	9	137	2.2	11.4	4
Golden Homes	7	12	3	10	8	18	18	15	7	9	10	17	134	2.1	11.2	5
Signature Homes	8	8	11	3	6	17	1	8	6	13	0	4	85	1.4	7.1	6

\*This information was sourced from the independent BCI WhatsOn Report Oct 2023 – Sep 2024 showing the number of buildings consented within the associated area.



jon@todayhomes.co.nz

027 420 5565

www.todayhomes.co.nz

# A Family Legacy



Left to Right: Mike, Siobhan, Caitlin, Simon (and children), Anne, Graeme, Jon & Olivia

Graeme and Anne Sanders began Today Homes 35 years ago in the conservatory of their home, starting with a simple ad in the local newspaper. Through hard work and dedication, they managed to create a home building company the Canterbury community could trust. The three sons Simon, Mike and Jon have now taken over the helm and continue their parents' legacy, building quality, affordable homes in Canterbury for owner occupiers and investors alike.

All being qualified builders, they know what it takes on-site to achieve the expected high standard. Graeme and Anne are still in the background, but are enjoying the semi-retired life watching their sons and company thrive. Today Homes is commonly known in the construction industry as the most organised and efficient builders, with systems and procedures in place that ensure every home is built to a high quality and delivered on time. We offer comprehensive guarantees over our workmanship and because we've been in the business of building new homes in greater Canterbury area for so many years having built over 2,500, our customers and trade know they can trust us.



[jon@todayhomes.co.nz](mailto:jon@todayhomes.co.nz)

027 420 5565

[www.todayhomes.co.nz](http://www.todayhomes.co.nz)

# A Safe Investment

Because we manage our business prudently, we have been able to ride out the ups and downs of the housing market and continue to deliver a high-quality product for our clients. We are proud to be a locally owned and operated company and it is important to us that, like our business, our homes stand the test of time.

Whether you're looking to build your first home, an architecturally designed showpiece or a family dwelling, our knowledgeable team will guide you through the process, so you achieve the home that you want. We can advise you right from the beginning of your project, including helping you to identify suitable land to build on and assisting you to secure finance and insurance.



[jon@todayhomes.co.nz](mailto:jon@todayhomes.co.nz)

027 420 5565

[www.todayhomes.co.nz](http://www.todayhomes.co.nz)



# The Today Homes Difference

- Family owned and operated for over 35 years
- Over 2,500 homes completed for our clients - with glowing testimonials
- 10 Year Master Build Guarantee included
- Number 1 Building Partner with Selwyn District Council - 2-10 working days fast tracking for consents to be issued, saving you 3-4 weeks in the build process
- Stone Benchtop to kitchen for extra durability and style
- Water Connection for fridge to all of our homes
- High quality Stainless Steel BOSCH appliances
- Exterior Auto Sensor Light to front for added security
- Data Box in all homes to house smart wiring
- Double layer of Batts in ceiling for extra insulation
- Thermally Broken Aluminium Windows and Doors with Argon Gas and Low-E Glass
- Heat Pumps sized to exceed Healthy Homes Standard in all homes
- We recycle between 40-50% of our building waste
- Allied Superslab Foundation for enhanced foundation design and performance
- We Bugle screw (not just nail) our timber frames together to increase the structural integrity to help prevent cracking in an earthquake or similar event
- Fire Retardant Masons Building Wrap - superior product allows us to continue to work inside prior to exterior cladding being installed saving you 2-3 weeks in the construction schedule.
- 365 Day Maintenance Programme with a dedicated Maintenance Manager



# Building Specifications

## CONSTRUCTION

Foundation	New H1 Compliant
Framing	90mm SG8 Framing
Wall and roof insulation	New H1 Compliant

## EXTERIOR

Roof	Colorsteel Long Run Roofing
Fascia and gutter	Colorsteel
Exterior cladding	Veneer Clay Brick with Mortar. Linea or Axon Features
Window and door	Thermally Broken with Argon Gas and Low-E Glass
Joinery garage door	Sectional Windsor Flat Woodgrain with auto opener/s
Entry door	Aluminium TGV with E-Lok Feature Handle

## INTERNAL

Ceiling heights	2.4m Throughout
Internal doors	Paint Smooth Finish Hollow Core
Lining	Painted GIB, Level 4 Plaster - Aqualine to bathroom & ensuite
Wardrobe joinery	White Melamine PVC Edged
Water heater	Thermann 250L Electric Hot Water Cylinder
Lighting and electrical	LED Recess Down Lights
Internal hardware	Holly Round
Ceiling hatch	600x600mm
Electrical	Generous allowance for double plugs, Fibre connection & TV aerial
Smoke alarms	As per Building Code

## BATHROOM

Shower	Clearlite Millennium 900x900mm with Satin Silver frame
Fittings	Mizu Drift Mk2 - Chrome
Toilet	Kado Lux Close Coupled BTW Overheight with Quick Release Seat
Vanity	Project Single Drawer Wall Vanity White 900mm
Mirror	900 x 1000 Glue Fixed Polished Edge
Heated Towel Rail	7-Bar Heated Towel Tower Ladder - Chrome
Wall Heater	Weiss heater

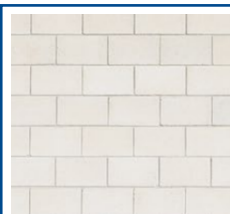
## EXTERNAL WORKS

Driveway	Plain Concrete Driveway and Crossing as per landscape plan
Patios & Paths	Plain Concrete Patio(s)/Path(s) as per landscape plan
Landscaping	Planted with a mixture of plants and trees as per landscape plan
Taps	3 exterior locations

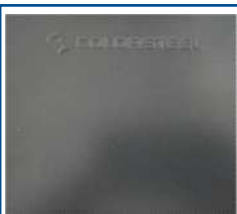


# Finishes

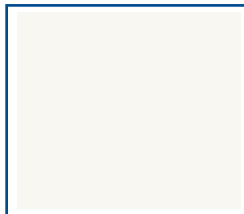
## EXTERIOR



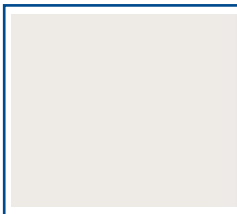
FIRTH - BRICK  
Devonstone  
Antique Blend  
with White Mortar



ROOF, FASCIA,  
GUTTER, DOWNPIPES,  
GARAGE DOOR (with  
garage door trim to  
match) Colorsteel  
Grey Friars



ALUMINIUM  
WINDOWS  
Matt Warm White  
Pearl

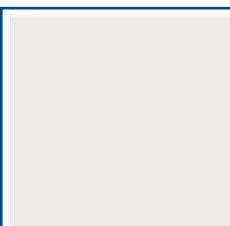


SOFFITS  
Dulux Cardrona

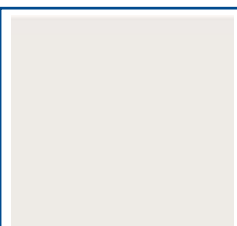


FEATURE CLADDING  
Dulux Grey Friars  
  
ENTRY DOOR  
Matt Grey Friars

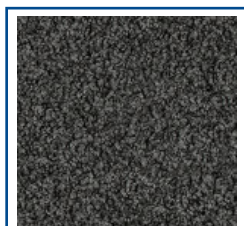
## INTERIOR



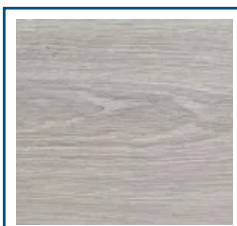
WALLS  
Dulux Cardrona



CEILINGS, DOORS,  
JAMBS, WINDOW  
FRAMES  
Dulux Cardrona



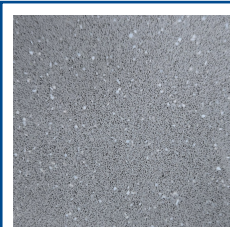
CARPETS  
GODFREY HIRST  
Detroit Cockle



LUXURY VINYL  
PLANKING Kitchen,  
Bathroom, Ensuite,  
WC - Classen 23003



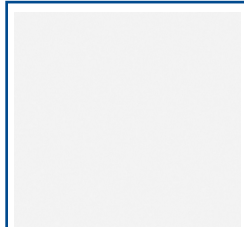
ROLLER BLINDS  
to Living/Dining/  
Bedrooms (Kitchen  
if required)



KITCHEN BENCH TOP  
PRIME STONE  
Pukekawa 20mm



PANTRY BENCH TOP  
PRIME LAMINATE  
Snow Fabrini



LAMINEX  
KITCHEN CABINETRY  
Malibu Naturale



KITCHEN  
SPLASHBACK  
Glass - Peppermint  
Pearl



KITCHEN HANDLES  
Stefano Orlati  
SO B  
Brushed Nickel





# Fixtures & Fittings



**PROJECT** Single Drawer  
Wall Hung Vanity  
White 900mm



**CLEARLITE** Millennium  
900mm x 900mm 2  
Sided Shower (Satin  
Silver)



**KADO** Lux Close  
Coupled BTW Toilet  
Suite with Quick  
Release Seat (4 Star)



**HEATED TOWEL**  
RAIL: 7 bar



**CLEARLITE**  
Pacific Drop in Bath  
1655mm x 750mm



**POSH SOLUS** Shower  
Rail Slide Mk33



**MIZU DRIFT**  
Basin Mixers Mk2  
(5 Star) & Shower  
Mixers Mk2



**MIZU DRIFT**  
Bath Outlet  
160mm & Straight  
Toilet Roll Holder



**HOLLY LEVER**  
on round rose l13H001



**WEISS**  
S/S Bathroom  
Heater FH24SS



**AQUATICA**  
LaundraTubbie  
with Mixer



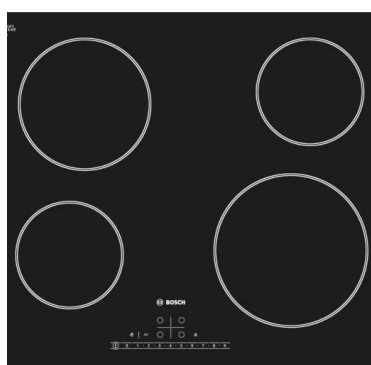
**E-LOK Series 9**  
Electronic Lock Brushed  
Stainless



# Equipment



BOSCH built in oven  
HBF133BS0A



BOSCH electric cooktop with  
Touch Controls PKE611K17A



BOSCH dishwasher  
SMS4HTI01A



ARISTON Canopy Rangehood  
90cm ACS90AX-L



Undermounted Stainless  
Steel Kitchen Sink



THERMANN ELECTRIC  
250L Cylinder



URBAN Back Opening  
Letterbox on Pole -  
Black (Lockable)



DAIKIN High Wall Heat  
Pump to Living  
(model specific to size of  
home)



HILLS Folding Frame  
Single 26m Clothesline



NITA PENDANT LIGHT  
1500mm in Black



# Investment Testimonials



**Luke & Jacqueline Brown**

3 reviews

★★★★★ a week ago **NEW**

Amazing, professional company to build with. We have done a few builds and their communication and service level was incredible. We received accurate weekly updates throughout the whole build, they stuck to the build timelines and even had CCC ahead of time! Couldn't have asked for a smoother building process - we would highly recommend Today homes!



**Adam Teo**

4 reviews

★★★★★ 4 months ago

I recently had Today Homes build my new home, and I couldn't be more pleased with the results. From start to finish, the entire process was seamless and professional.

The team at Today Homes demonstrated exceptional expertise and attention to detail. Their advice on the best options for my new home was invaluable, ensuring that the final products not only enhanced the aesthetics of each room but also met my practical needs perfectly.

I highly recommend Today Homes to anyone looking to build a new home. Their brilliant work has truly transformed my living space, and I am beyond satisfied with their service. Thank you, Today Homes, for a job well done!



**Stephane David**

Local Guide · 56 reviews

★★★★★ 2 months ago

Today Homes have been fantastic to work with, from planning to completion. The process was clear, the dates realistic and they provided regular updates and were exactly on time according to the plan. The team was also very accommodating and responsive in answering our queries.



jon@todayhomes.co.nz

027 420 5565

www.todayhomes.co.nz



# The 5 Step Purchase Process

1

## Reach Out to Us

Get in touch with a friendly equiti team member to check if your dream property is available.

2

## Sign on the Dotted Line

Once we confirm the property is yours for the taking, we'll help you with the paperwork using the official Real Estate Institute of New Zealand and Auckland District Law Society Agreement.

3

## Due Diligence Time

After everyone signs the Agreement, you have 10-15 working days to do your homework. Chat with your lawyer, financial adviser, accountant, and mortgage broker to make sure you're good to go. If you're not happy, you can cancel the Agreement without any fuss!

4

## Seal the Deal

Happy with everything? Awesome! Let your lawyer know, and the Agreement will be locked in. Your deposit is now due.

5

## Prepare for Smooth Sailing

Your deposit is safely stashed in the vendor's solicitor's trust account. As we get closer to completion, we'll introduce you to important folks like a building inspector, chattel valuer, property manager, and insurance advisor to make sure your investment property is ready for a smooth and successful settlement!



# Meet The Team

## Equiti believe in building better futures, together.

New Zealand has an undersupply of homes. We are not building enough homes to cater for the people that choose to call New Zealand home, let alone the new ones that are arriving each week.

Most Kiwi's know that they will not have enough income to fund their lifestyle in retirement. Some know that they need to do something but don't know where to turn.

Equiti believe in growing wealth through property. This is through a passive, buy and hold long-term strategy. That is buy new, buy well, make sure you can afford it, and hold it for as long as you need to; to get what you need from the property. And review your strategy annually, with your financial adviser and, if you can afford it, do it again....and again. To do this you need a trusted financial adviser, the right property advice and the right properties!

Equiti are the real estate platform that helps to bring it all together. We are here you help you on your journey to create wealth through property. We look forward to working with you and building better futures, together.



### **Hamish Cowan** | Founder and Director

hamish@equiti.co.nz | 021760046

Hamish founded equiti to help New Zealanders build better futures through property wealth. With 17 years in finance and real estate, he supports advisers and purchasers in providing compliant, tailored property solutions.



### **Jordan Gosden** | Operations Manager

jordan@equiti.co.nz | 02102299177

With 9+ years in real estate, Jordan's expertise spans system management, process improvement, and operations. From admin roles to Customer Service Manager, she now excels as Operations Manager, driving efficiency, ensuring compliance, and fostering team success.



### **Suzanne Hill** | New Build Property Investment Specialist

suzanne@equiti.co.nz | 027 273 5734

Suzanne is a Licensed Salesperson. She has sold over 170 properties and helped hundreds of Kiwis build their property portfolios. With her extensive expertise as a Property Coach, Financial Adviser, and Accountant, you can trust that you're in the best hands.





**equiti.co.nz**

[info@equiti.co.nz](mailto:info@equiti.co.nz)

Licensed under the REAA 2008

**DISCLAIMER**

This information has been supplied on behalf of the vendor. Accordingly, Equiti Limited and its contractors are merely passing over the information as supplied to us by the vendor. We cannot guarantee its accuracy and reliability and all intending purchasers are advised to conduct their own due diligence investigation into the same. To the maximum extent permitted by law, Equiti Limited and its contractors do not accept any responsibility to any person for the accuracy of the information herein. Renders are an artist impression only.